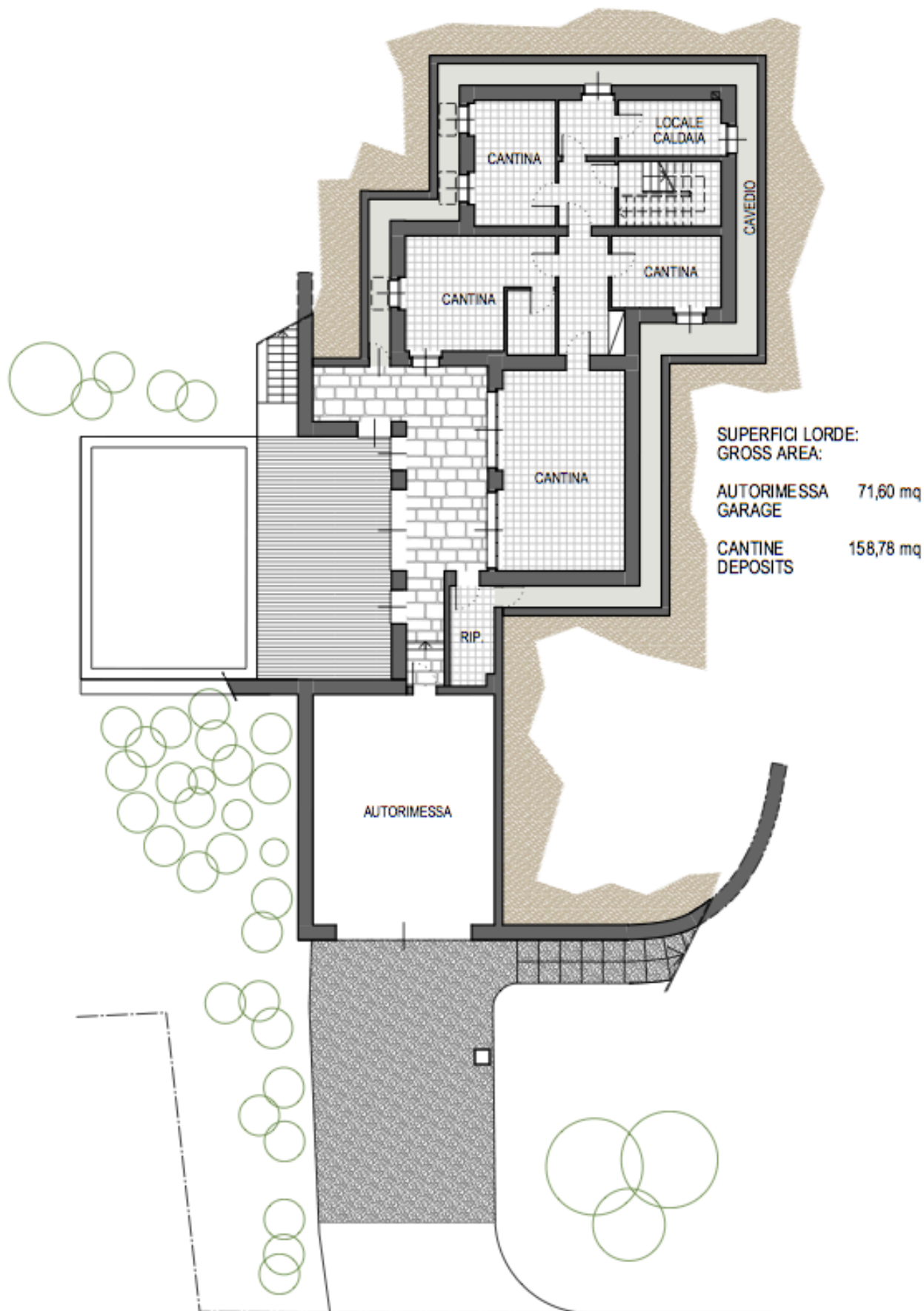


SUPERFICIE LOTTO = 5.198,00 mq  
SURFACE LOT

PLANIMETRIA GENERALE  
GENERAL PLAN

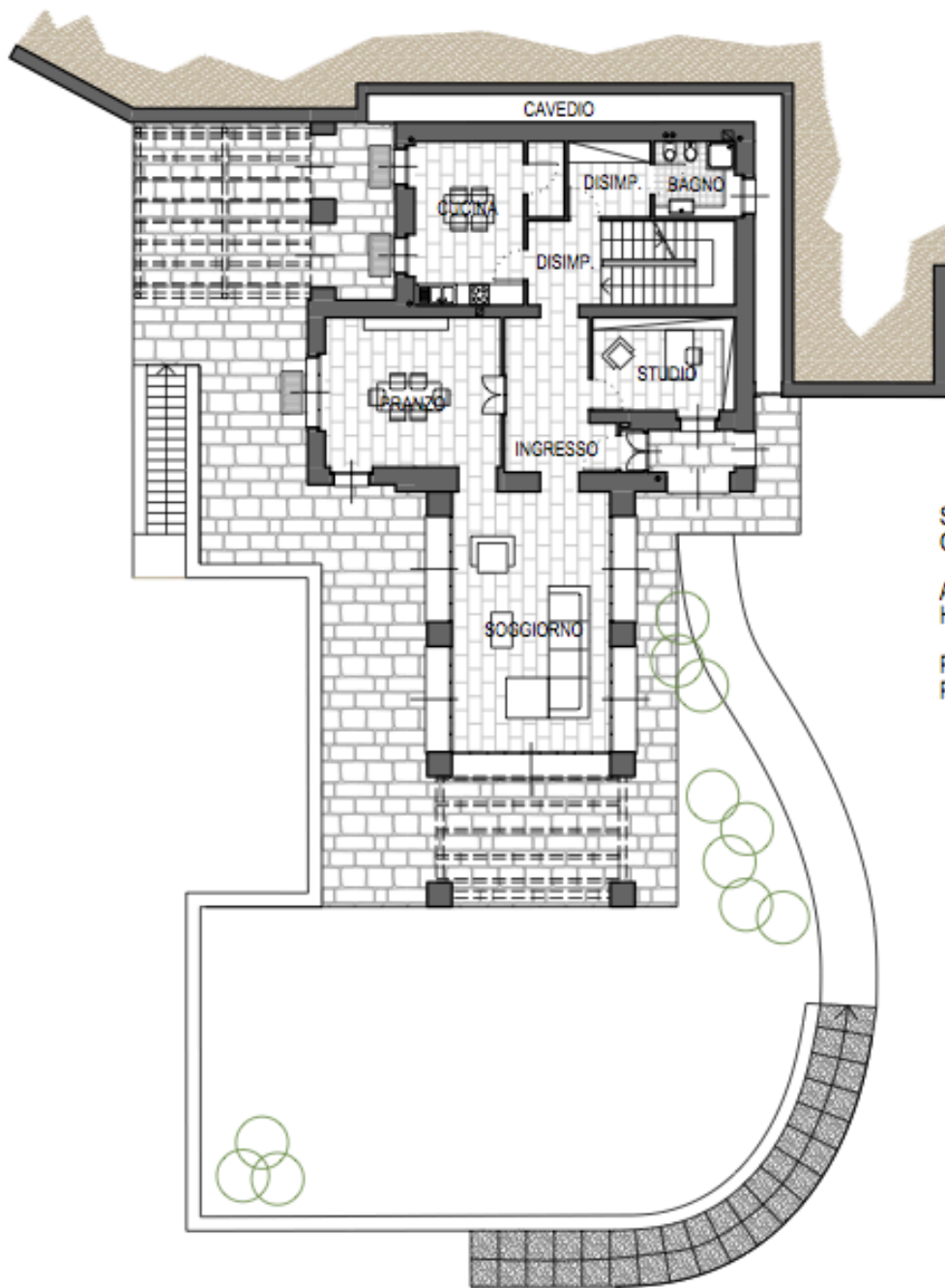
VILLA C: "AL RIO"



SUPERFICI LORDE:  
 GROSS AREA:  
 AUTORIMESSA GARAGE 71,60 mq  
 CANTINE DEPOSITS 158,78 mq

PIANO SEMINTERRATO  
 BASEMENT FLOOR

**VILLA C: "AL RIO"**

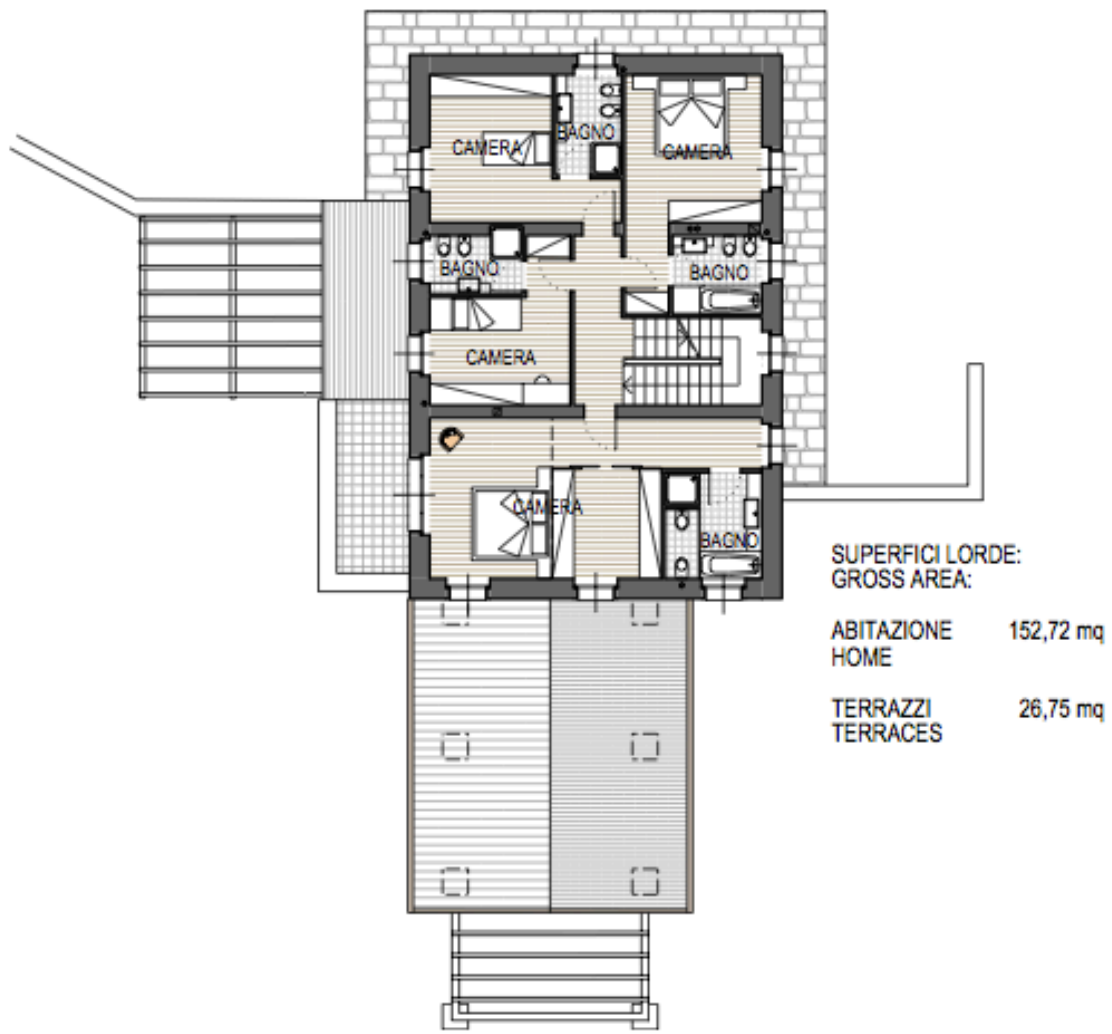


SUPERFICI LORDE:  
 GROSS AREA:

ABITAZIONE HOME	162,82 mq
PORTICI PORCH	17,52 mq

PIANO TERRA  
 GROUND FLOOR

**VILLA C: "AL RIO"**

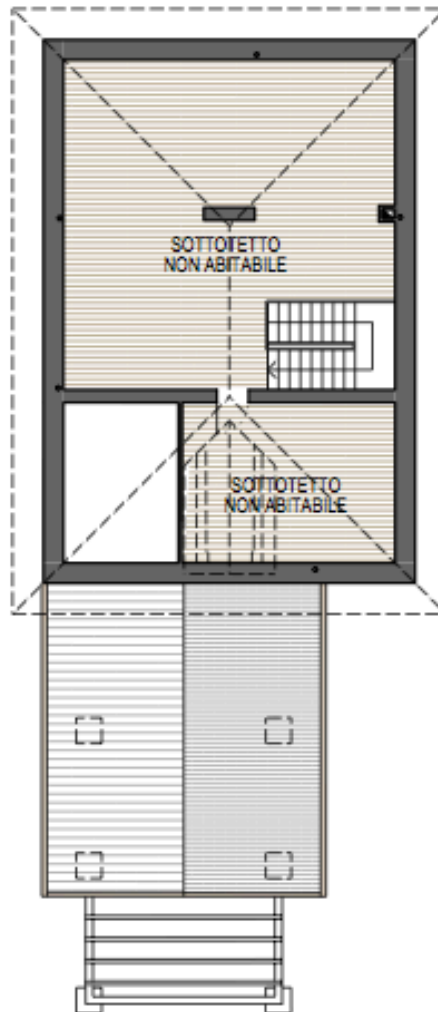


SUPERFICI LORDE:  
GROSS AREA:

ABITAZIONE HOME	152,72 mq
TERRAZZI TERRACES	26,75 mq

PIANO PRIMO  
FIRST FLOOR

**VILLA C: "AL RIO"**



SUPERFICI LORDE:  
GROSS AREA:

SOTTOTETTO  
ATTIC (NOT HABITABLE) 133,67 mq

PIANO SOTTOTETTO  
ROOF FLOOR

**VILLA C: "AL RIO"**